

CONTINUOUS EXPRESSION WALL PANEL


ev<sup>+</sup>  
ARCHITECTURAL PANEL SYSTEM



# EVOLVING VISION OF OUTER SIMPLICITY.



For nearly half-a-century, the aluminum composite panel (ACP / ACM) has remained unchanged. Until now! The composite panel has captured a significant percentage of exterior façade work and placed itself on structures around the globe making corporate statements and good business sense, as well. Now, Architectural Building Products has innovatively positioned the composite panel once again, at the "cutting-edge" of architectural possibilities. As our company evolves, so does our product. As fabricators of wall panel systems we identified what was missing in creating a seamless facade and believe we've taken that step forward.



We introduce to you the  
Evolution Wall Panel System  
by Architectural Building Products

The Evolution or EVO panel has no equal. Patent Pending and fully tested, EVO embraces the future vision for building facades. A seamless transition of material finishes, elegantly laying continuous across the building face with no visible interference... just pleasing to the senses. We set out to resolve what was missing in a panel design and presto, EVO! We have resolve. EVO is pleasing to the eyes, the budget and the architectural statement of simplicity.

EVO™ Architectural Panel System (U.S. Pat. Pending)

# ev<sup>+</sup> TECH SPEC DATA

## RAINSCREEN TESTING

AAMA 508 - 07 COMPLIANT  
Voluntary Test Method and Specification for Pressure Equalized  
Rain Screen Wall Cladding Systems

## AIR/WATER/WIND PERFORMANCE

AAMA 501.1-05 (Dynamic)  
ASTM E 1233 (Modified)  
ASTM E 283 (Static)  
ASTM E 330 (Static)  
ASTM E 331 (Static)

## EVOSTONE PERFORMANCE

Evaluation of EVOSTONE Coating System testing in accordance with:

ASTM B117-11 (Salt Spray)  
ASTM D4541-09 (Adhesion Strength)  
ASTM D2794 (Impact Resistance)  
ASTM D6944-09 (Thermal Cycling)  
ASTM D2247-11 (Humidity Resistance)  
ASTM D1654 (Corrosion Creepback)  
ASTM G155-13 (Solar & Weathering)

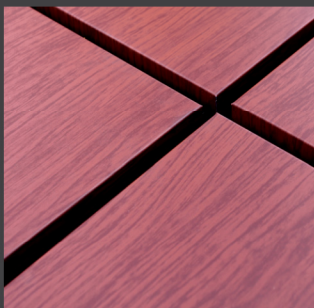
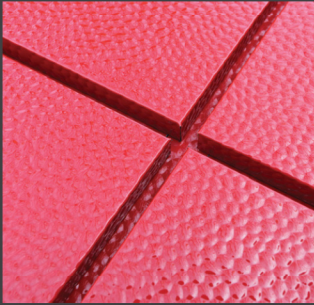
## FIRE TEST METHOD

NFPA 285  
Standard Fire Test Method For Evaluation of Fire Propagation  
Characteristics of Exterior Non-Load-Bearing Wall Assemblies  
Containing Combustible Components

## MATERIAL SIZE AVAILABILITY

PE & FR core options with sheet material sizes

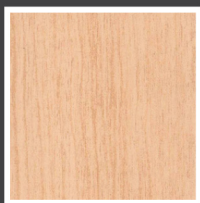
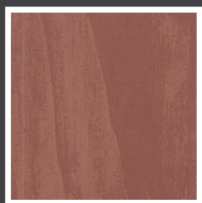
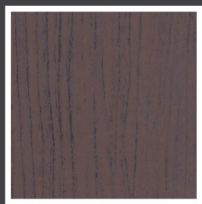
**WIDTHS** 50" | 62" **LENGTHS** up to 196" **THICKNESS** 4mm | 6mm



# EVOWOOD<sup>+</sup>

## ARCHITECTURAL PANEL SYSTEM

- Economical alternative to natural wood grain products
- Vast array of finishes for that particular look
- Optional fire-rated (FR) or polyethylene (PE) core available
- Continuous grain pattern appearance due to patented design
- 100% concealed fastener system
- Wide range of sizes allow for creative panel options
- Sophistication & Value



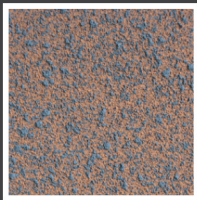
**JUST A FEW OF  
OUR COLOUR OPTIONS.**

*Actual colours may not be exactly as shown.*

# EVOSTONE<sup>+</sup>

## ARCHITECTURAL PANEL SYSTEM

- A direct replacement for cementitious, marble, granite, porcelain & clay products
- Economical alternative with many available sizes and patterns
- Textured attributes eliminate the dings, dimples & dents of other finishes
- Designed to be lighter in composition with less demand on the system
- Optional fire-rated (FR) or polyethylene (PE) core available
- Anti-graffiti & UV inhibitor is available for ease of clean-up, if necessary



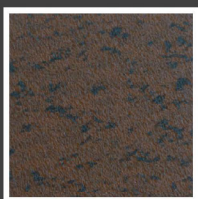
**JUST A FEW OF  
OUR COLOUR OPTIONS.**

Actual colours may not be exactly as shown.

# EVOEXOTIC

## ARCHITECTURAL PANEL SYSTEM

- Wide range of colours and finishes available
- Patented design makes a unique statement
- Optional fire-rated (FR) or polyethylene (PE) core available
- Various finishes in 2D, 3D and colour shift / HOLO technology
- Copper, Corten Steel, Brushed Aluminum, Stainless Steel, Mirror, Zinc pre-weathered or self-weathering, Hammer pattern and Embossed are some options
- Be creative in your quest for being different



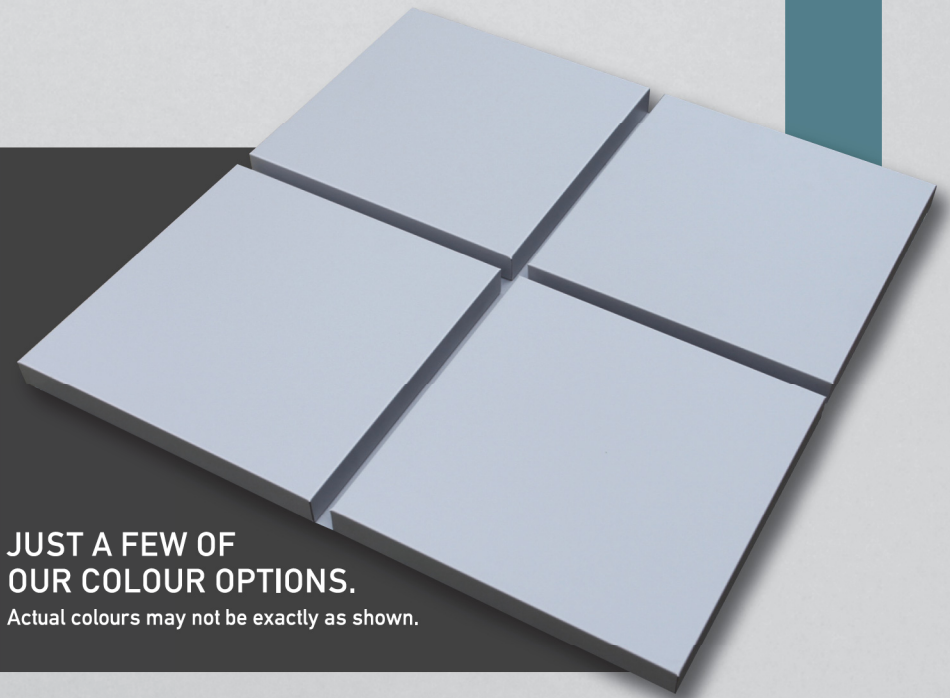
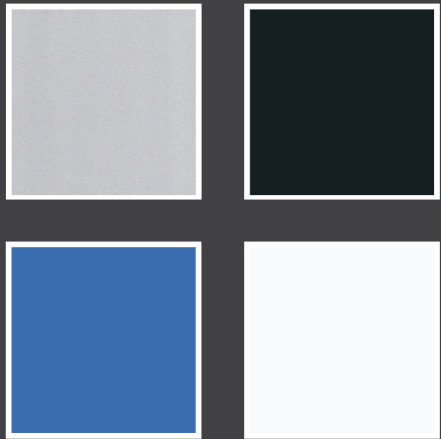
**JUST A FEW OF  
OUR COLOUR OPTIONS.**

Actual colours may not be exactly as shown.

# EVOPURE<sup>+</sup>

## ARCHITECTURAL PANEL SYSTEM

- Proven performers in a vast assortment of colours
- Micas, Metallics & Solid colours in PPG Duranar & Beckrytech finishes
- Optional fire-rated (FR) or polyethylene (PE) core available
- Program and Corporate ID colours
- Endless ability to match custom colours



**JUST A FEW OF  
OUR COLOUR OPTIONS.**

*Actual colours may not be exactly as shown.*

COMMERCIAL

RESIDENTIAL

INSTITUTIONAL

AUTOMOTIVE



ARCHITECTURAL  
BUILDING PRODUCTS

1.800.870.7595

[abp-distributors.com](http://abp-distributors.com)